

SEPTEMBER 2022



Hello Fall

♥ ♠ ♣ ♦
**TEXAS
HOLD 'EM**
SEPTEMBER 1
page 4

**NATIONAL
DAY FOR KIDS**
★★PDF LINE★★
SEPTEMBER 9
page 2

**BUNDLES FOR
BABIES**
SEPTEMBER 23
page 15

**HARVEST
FESTIVAL**
KIDS DAY OUT!
SEPTEMBER 24
page 2



www.BealeFSS.com

Your guide to services and events provided by the 9th Force Support Squadron.

NATIONAL DAY FOR KIDS

★★ PDF LINE ★★

Kids experience a Pre-Deployment Formation line just like their parents would prior to being deployed!

SEPTEMBER 9 • 3–6PM • FREE EVENT!

STATIC DISPLAYS • FOOD

HARVEST FESTIVAL

KIDS DAY OUT!

SEPTEMBER 24 • 10AM–2PM

FOOD • FUN • PHOTOS • FRIENDS

Ages 5-12 • Cost: \$20 members / \$25 non-members

Please sign up by September 21



Youth Center • 634-4953

BealeFSS.com/Youth-Center • facebook.com/BealeChildandYouthPrograms



September 2022

SEE WHAT'S INSIDE

Youth Center	2	Education Center	14
Moos & Brews	4	Military & Family Readiness	15
NAF Human Resources	5	CDC / EFMP	16
Outdoor Adventure Center / ITT	6	Family Child Care	17
Beale Lanes Bowling Center	7	Aero Club	18
Theater	8	Fitness Center: Wellbeats Calendar	19
Arts & Crafts	9	Beale Food Guide	20–21
Library	11	FSS Map	22
Events Calendar	12–13	FSS Hours & Directory	23



9TH FORCE SUPPORT SQUADRON

Lt Col Melissa Day
Commander

MARKETING STAFF
Cathy Rodgers
Marketing Director

Laura Holley
Commercial Sponsorship

Ricky Villegas
Visual Information, Digital Media

Tom Tennies
Visual Information, Print

The **RECCE MAGAZINE** is published monthly by the Beale AFB 9th Force Support Marketing Department. Contents of the RECCE Magazine are not necessarily the official views of, or endorsed by, the U.S. Government, the DoD, or the Department of the Air Force. The appearance of advertising in this publication does not constitute endorsement by the federal government.

ALL PROGRAMS, DATES AND TIMES ARE SUBJECT TO CHANGE WITHOUT NOTICE.

For information regarding advertising in the Recce Magazine or to sponsor a program or event contact:

9th Force Support Marketing Office
6249 C Street, Beale AFB, CA 95903
530.634.5407/634.2283



www.BealeFSS.com



www.facebook.com/Beale9FSS



www.instagram.com/Beale9FSS

TEXAS HOLD 'EM



THURSDAY, SEPTEMBER 1

SIGN UP AT 4:30PM • TOURNAMENT STARTS AT 5PM

WINNERS WIN GIFT CARDS

First Place \$100 • Second Place \$50 • Third Place \$25

Members Free ~ Non-Members \$20

Open to ages 18 & older

Moos & Brews • 634-0936

www.BealeFSS.com/Recce-Point-Club • www.facebook.com/MoosAndBrews

MOOS & BREWS

OPEN MIC NIGHT!



*Last Friday
of the month, 3-5pm*

**HERE'S YOUR
CHANCE TO
BE A STAR!**

*Open to everyone! Step up to the mic
and share your amazing talent.
Singing - Poetry - Musical Instruments*

Moos & Brews • 634-0936

www.BealeFSS.com/Recce-Point-Club • www.facebook.com/MoosAndBrews

Become a Federal Employee at Beale AFB Join the TEAM!



CREATE YOUR PROFILE & APPLY ONLINE

@ USA JOBS.GOV

An Equal Opportunity Employer
NON-APPROPRIATED FUND (NAF) JOBS
Steady Employment | Regular & Flex Positions

Benefits*:

- Promotion Opportunities
- Health, Dental & Life Insurance
- Awards • 401 (k) Savings Plan
- Holiday & Overtime Pay
- Shift Differential & Sunday Premium
- Night Pay Differential
- Worker's/Unemployment Compensation
- Military Leave • Administrative Leave
- Annual & Sick Leave
- Court Leave • Maternity Leave
- Family & Medical Leave Act (FMLA)
- Leave for Adoption

** Not all benefits available to all positions*

Access to:

- Hub Zemke Library
- Outdoor Adventure Center
- Information, Tickets & Travel
- Harris Fitness Center
- Contrails Dining Facility
- Beale Lanes Bowling Center
- Youth Center
- Child Development Center
- Community Center
- Arts & Crafts • Auto Hobby
- Aero Club • Rod & Gun Club
- Venture Park

CURRENTLY HIRING*

- Recreation Asst (Engraver) • Cashier • Cook
- Custodial Worker • Auto Worker • Cashier
- Child & Youth Program Assistant
- Guest Services Representative

**Job listing current at time of print*

SCAN THE QR CODE WITH YOUR PHONE TO GO
DIRECTLY TO OPEN POSITIONS AT BEALE AFB



For assistance, email 9FSS.FSMH@us.af.mil

NAF Human Resources • 634-2240

www.BealeFSS.com/NAF • www.facebook.com/Beale9FSS

OAC TRIPS

Point Reyes Seashore

We'll travel to the spectacular seashore and hike down to the beach to see wildlife in its natural habitat.

September 3 • 9am–7pm
\$35 (trans. only) Sign up by 8/30

Gold Country Brew Tour

~ Session One ~

We'll introduce beer lovers to some of the best craft breweries in the Gold Country.

September 17 • 11am–6pm
\$20 (trans. only) Sign up by 9/13

Ocean Fishing Charter

Join us for an all-inclusive guided charter fishing trip to the Bay Area. Limited availability.

September 24 • 2am–6pm
R4R Price: \$65 (transportation & gear)
Sign up by 9/20. Call for details.

ITT TRIPS

Apple Hill Wine Tour

Come along with us as we sample the different wines and hard ciders of Apple Hill. Take in the beautiful scenery and create a memorable experience with us!

September 11 • 9am–7pm
\$25 (trans. only) Sign up by 9/6

Purchase your discounted tickets from us for these popular amusement parks.

Disneyland, Universal Studios Hollywood, and Disney's Armed Services Salute Ticket Program

Discounted tickets for Florida's Disney World and Universal Studios Orlando are also available.

Tickets must be purchased from ITT, located in the Community Center.

OUTDOOR ADVENTURE CENTER EQUIPMENT RENTALS

- LAWN and GARDEN
- BIKES • TENT TRAILERS
- PICNIC EQUIPMENT
- WATER TOYS • INFLATABLES
- CAMPING GEAR • BOATS
- PARTY RENTALS

SEPTEMBER RENTAL SPECIAL
20% OFF
WEEKDAY RATES ON ALL RENTALS!

Outdoor Adventure Center
634-2054
BealeFSS.com/OAC
facebook.com/BealeOAC

Information, Tickets & Travel
634-4882
BealeFSS.com/Information-Tickets-Travel
facebook.com/BealeITT

FALL LEAGUES *Now Forming!*

Now accepting sign-ups for 2022 Fall Leagues.
Adult leagues run 32 weeks with teams of 4 and bowl 3 games per week. All scores are handicapped, no skill required. Cost will be determined at sign up. Sign up for one or all!

BEALE EXTRAMURALS

Starts September 1, 5:30pm
Teams of 4. Men and women.

JUST 4 MEN

Starts September 6
Teams of 4. Men only.

WEDNESDAY MIXERS

Starts September 7, 6:45pm
Teams of 4. Men and women.

KINGS AND QUEENS

Starts September 8, 10am
Teams of 4. Men and women 50 & over.

SATURDAY JUNIORS

Starts September 10, 11am
Bowl 3 games. Ages 17 & under.
\$10 per week. Coaching available.

MONTE CARLO

B O W L I N G

KNOCK DOWN MULTI-COLORED PINS TO WIN CASH!

SEPTEMBER 10 • 7PM CHECK-IN AT 6:30PM

9-Pin No-Tap | Bowl 3 Games | Entry fee \$16

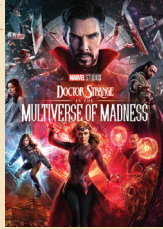
Beale Lanes Bowling Center • 634-2299

bealefss.com/beale-lanes • facebook.com/BealeLanes

JOIN US FOR SATURDAY
MOVIE NIGHT
 AT THE INDEPENDENCE CINEMA

Doors open at 6:30pm • **SHOWTIME** at 7pm

September 10



**DOCTOR STRANGE:
 Multiverse of Madness**
 [Rated PG-13]

September 17



ETERNALS
 [Rated PG-13]

September 24



**JURASSIC WORLD:
 Dominion**
 [Rated PG-13]

Independence Cinema • 634-3140
www.BealeFSS.com/Independence-Cinema

INDEPENDENCE CINEMA

**FIRST
 COMMAND**

INVEST IN YOUR FUTURE

You never back down from a challenge. You understand what it means to sacrifice. And you always put your discipline first. Now it's time to focus on building a financial future worthy of your service.

Contact us today to begin your pursuit of financial security.

FIRST COMMAND FINANCIAL SERVICES

5767 Greenback Lane, Suite 150
 Sacramento, CA 95841
www.firstcommand.com
916.567.9600

©2022 First Command Financial Services, Inc. is the parent company of First Command Brokerage Services, Inc. (Member SIPC, FINRA), First Command Advisory Services, Inc. and First Command Insurance Services, Inc. Securities products and brokerage services are provided by First Command Brokerage Services, Inc., a broker-dealer. Financial planning and investment advisory services are provided by First Command Advisory Services, Inc., an investment adviser (CA Lic. No. 0483891). Insurance products and services are provided by First Command Insurance Services, Inc. Securities are not FDIC insured, have no bank guarantee and may lose value. A financial plan, by itself, cannot assure that retirement or other financial goals will be met. First Command Financial Services, Inc. and its related entities are not affiliated with or endorsed by the U.S. government or the U.S. Armed Forces.



9AM-12PM

\$10 INCLUDES INSTRUCTION + SEWING MACHINE USE

SEW A MICROWAVE COZY

SIGN UP BY SEPT. 7 & PICK UP SUPPLY LIST

**SEWING CLASS
SEPTEMBER 10
ARTS & CRAFTS
634-2294**

Arts & Crafts • 634-2294
www.BealeFSS.com/Arts-Crafts-Center • www.facebook.com/BealeArtsAndCrafts

Tree of Life Wreath Making

SEPTEMBER 24, 12-2PM

MAKE A WREATH WITH BITS OF NATURE.

COST: \$25. MINIMUM AGE: 16 YRS. SIGN UP BY SEPTEMBER 21

Arts & Crafts • 634-2294
BealeFSS.com/Arts-Crafts-Center • facebook.com/BealeArtsAndCrafts

You've sacrificed for us

NOW GET THE EDUCATION YOU'VE EARNED

Golden Gate University's commitment to military-connected students includes flexible programs, a supportive community, and specialized coaching services to help you make the most of your education benefits—including

BAH for San Francisco!

**GOLDEN GATE
UNIVERSITY**
MILITARY



Study online or in-person at
our San Francisco campus



Hub Zemke Library

Story Time for Preschoolers:

“I am Frida Kahlo” by Brad Meltzer
September 15, at 10:30am
Kids will take home a portrait of
Frida Kahlo to color.



Pete the Cat Craft Bags:

This month we are celebrating two
books: “Pete the Cat and his Four
Groovy Buttons” & “Pete the Cat I love
my White Shoes” by James Dean.

Pick up your Craft Bag at Hub Zemke
Library, call 530-634-2314, or email us at
HZLBeale@gmail.com to reserve your craft
bags. (while supplies last)

Library • 634-2314

www.BealeFSS.com/Hub-Zemke-Library

www.facebook.com/HubZemkeLibrary

SAVE THE DATE!

FALL BAZAAR!

OCTOBER 8
10am-2pm
Recce Point Club

CALLING ALL VENDORS!

We are looking for home-based businesses & craft vendors for our October Fall Bazaar at the Recce Point Club.

Vendor fee: \$20
Includes a 6 ft. table (extra table \$5)

To reserve please contact Susan Jones at 634-2833.

SUNDAY	MONDAY	TUESDAY
<p>For details and updates on any of the events in the Recce Magazine please log on to the Current Events page on our website at www.bealefss.com</p>		
4	5 Labor Day 	6 Car Buying Wksp. Touchpoint Vesting <i>(see page 15)</i> Just 4 Men League <i>(see page 7)</i>
11 Apple Hill Wine Tour <i>(see page 6)</i>	12	13
18	19	20
25	26	37

WEDNESDAY	THURSDAY	FRIDAY	SATURDAY
	<p style="text-align: center;">1</p> <p>Smooth Move Brief <i>(see page 15)</i></p> <p>Texas Hold'em <i>(see page 4)</i></p> <p>Extramurals Bowling <i>(see page 17)</i></p>	<p style="text-align: center;">2</p> <p style="text-align: center;">ACC Family Day</p>	<p style="text-align: center;">3</p> <p>Point Reyes Trip <i>(see page 6)</i></p>
<p style="text-align: center;">7</p> <p>Boots to Business <i>(see page 15)</i></p> <p>Wednesday Mixers <i>(see page 7)</i></p>	<p style="text-align: center;">8</p> <p>Boots to Business <i>(see page 15)</i></p> <p>Kings & Queens Bowl <i>(see page 7)</i></p>	<p style="text-align: center;">9</p> <p>Everything EFMP <i>(see page 15)</i></p> <p>Day for Kids <i>(see page 2)</i></p>	<p style="text-align: center;">10</p> <p>Sewing Class <i>(see page 9)</i></p> <p>Movie Night <i>"Doctor Strange"</i> <i>(see page 8)</i></p> <p>Monte Carlo Bowl <i>(see page 7)</i></p>
<p style="text-align: center;">14</p> <p>Introduction to TSP <i>(see page 15)</i></p>	<p style="text-align: center;">15</p> <p>Smooth Move Brief <i>(see page 15)</i></p> <p>Story Time <i>(see page 11)</i></p>	<p style="text-align: center;">16</p>	<p style="text-align: center;">17</p> <p>Movie Night <i>"Eternals"</i> <i>(see page 8)</i></p> <p>Brew Tour <i>(see page 6)</i></p>
<p style="text-align: center;">21</p>	<p style="text-align: center;">22</p> <p>Federal Resume Tips <i>(see page 15)</i></p>	<p style="text-align: center;">23</p>	<p style="text-align: center;">24</p> <p>Kids Day Out <i>(see page 2)</i></p> <p>Wreath Making <i>(see page 9)</i></p> <p>Movie Night <i>"Jurassic World"</i> <i>(see page 8)</i></p>
<p style="text-align: center;">28</p>	<p style="text-align: center;">29</p>	<p style="text-align: center;">30</p> <p>Open Mic Night <i>(see page 4)</i></p>	



Recce U Professional Development

FOR MORE INFORMATION ABOUT PROFESSIONAL DEVELOPMENT OPPORTUNITIES, PLEASE CONTACT YOUR RECCE U TEAM

Career Assistance Advisor

SMSgt Anthony "Hawk" Hawkins • anthony.hawkins.1@us.af.mil • 634-3644

Wing Professional Development NCOIC

SSgt Mary Paz Chiguina • mary.paz_chiguina@us.af.mil • 634-4747

FTAC NCOIC

SSgt Chelsea Tansley • chelsea.tansley@us.af.mil • 634-4747



Let me be of Service

TO THANK YOU FOR YOURS
**YOUR NEW HOME BASE
IS MY MISSION.**

As a **MILITARY RELOCATION PROFESSIONAL (MRP)**, I can help make your Permanent Change of Station a Peaceful Change of Scenery. I understand:

- VA Financing
- Military Benefits
- BAH Rates
- VA Loan Limits
- Relocation Requirements

Contact me today!

Whether you're active duty, a veteran or a family member, you need a real estate professional who understands the challenges of a military relocation. You need someone who will make your transfer simpler and sweeter – someone who will fight for your home, like you fought for ours. You need a REALTOR® who has earned their MRP certification.

Wesely & Associates, Inc. DRE# 01527306



EQUAL HOUSING OPPORTUNITY



REALTOR

LAURA BETZ

Broker Associate, DRE# 01281446

C: 916-768-6456

mynorcalrealestate@gmail.com

www.MyNorCalRealEstate.com



MILITARY & FAMILY READINESS CENTER

Classes and Workshops

Via Zoom!

Call 634-2863 to register and receive your Zoom invitation.

Ditching the Dorms

SEPTEMBER 1 • 7-8:30pm

A class for those who have never lived on their own and wanting to move out of the dorms.

Car Buying Workshop

SEPTEMBER 6 • 7-8pm

Valuable information for those looking to purchase a new or used vehicle.

Smooth Move

SEPTEMBER 1 • 2:30-4pm

SEPTEMBER 15 • 10-11:30am

Out-processing workshop to learn about preparing for upcoming PCS move.

In-person Classes!

Classes are held at the M&FRC. Call 634-2863 to register.

Ditching the Dorms

SEPTEMBER 1 • 9-10:30am

A class for those who have never lived on their own and want to move out of the dorms.

EFMP Orientation "Everything EFMP"

SEPTEMBER 9 • 11am-12pm

EFMP orientation for newly enrolled EFMP families. Learn all that the EFMP program has to offer.

PFR Touchpoint: Vesting In TSP

SEPTEMBER 6 • 9-10am

Mandatory financial touchpoint requirement for Airmen reaching two years of service.

Introduction to TSP

SEPTEMBER 14 • 9-10am

An overview of TSP enrollment and participation, contributions, traditional vs. other options.

Car Buying Workshop

SEPTEMBER 6 • 11am-12pm

Valuable information for those looking to purchase a new or used vehicle.

Federal Resume Writing

SEPTEMBER 22 • 9-11am

A workshop for those interested in federal job opportunities and federal resume tips.

Boots to Business

SEPTEMBER 7-8 • 9am-4pm

A workshop geared towards business plan development, franchising, and legal issues.

Bundles for Babies

SEPTEMBER 23 • 9am-12pm

Budgeting for your baby from conception to college, plus other valuable information.

Military & Family Readiness Center • 634-2863

BealeFSS.com/AFRC • facebook.com/BealeAirmanFamilyReadiness

The Beale Child Development Center is looking for part-time substitutes who live in Base housing.

BENEFITS INCLUDE:

Work close to home • Part-time-Flexible hours
Full training program • Regular pay increases
Develop future generations

OPTIONS:

Become part-time regular with benefits • Increase hours
Credential assistance • Incentives

HOW TO APPLY

Log on to www.usajobs.gov and create an account.
Search KEYWORD: **Child and Youth Program Assistants**
Enter LOCATION: **Beale AFB**
Follow direction to apply and wait for a response.

FOR ASSISTANCE

Email: 9FSS.FSMH@us.af.mil or NAF Human Resources at 530-634-2240

Child Development Center • 634-4717

www.BealeFSS.com/CDC • www.facebook.com/BealeYouthPrograms

EFMP & RESPITE CARE PROGRAM

Receive 40 hours per month of free child care for military families with a disabled child.



If your child has a disability, your family may qualify to be Q-Coded and registered with the EFMP program with the Air Force.

If you are verified as an EFMP family, you can qualify for Respite Care for the child with a disability, and for all the siblings as well. The hours and the respite care providers are scheduled monthly through the FCC Coordinator.

Contact the FCC Coordinator at (530) 812-3117 or bealefcc@gmail.com



To learn more about the EFMP Program, please contact **Kim Hogue** at kimberly.hogue.1@us.af.mil or the EFMP Medical Specialist, **Melissa Gardner** at melissa.gardner.ctr@us.af.mil.

Expanded Child Care

Family Child Care needs YOU!

If you love children, this is an opportunity that can't be missed!

- All training provided
- Work out of your own home
 - Set your own hours
- Toys & equipment provided by the Air Force
 - Build your resume
 - Set your own rules
- Provide much needed help to service members and their children

Contact the FCC office to start your application process today!



FAMILY CHILD CARE

Family Child Care • 530-634-4418
9FSS/FSFF@us.af.mil



FAMILY CHILD CARE



Drs. Insiya & Raj Zanzi

"A Healthy Smile is A Beautiful Smile!"
We Welcome Beale AFB Families



- **WE ACCEPT MILITARY INSURANCE** •   
- Evening & Saturday Appointments Available
- New Patients & Emergencies Welcome
- Flexible Payment Plans
- Crowns, Root Canals, Implants, Veneers and Dentures
- Digital X-rays, IntraOral Camera, Massage Chairs, and NETFLIX
- Braces & INVISALIGN for adults & kids



Gentle Family & Cosmetic Care

Raj Zanzi, DMD • Insiya Zanzi, DDS
Allen Sanders, DDS (Orthodontics)



916-797-0825
1424 Blue Oaks Blvd.,
Roseville (Hwy 65 & Blue Oaks exit)

\$50 CREDIT

Towards Dental Work
(Excluding exam, x-rays, cleaning & deductible)*
New patients only, one per family
*Not valid with any other offer.
Expires: September 30, 2022

www.12BridgesDental.com

Paid Ad. No Federal Endorsement of Advertisers Intended.

Take your first step to getting your pilot license.

PRIVATE PILOT GROUND SCHOOL

Classes now forming!

Open to both Military & Civilians

This 10-week course encompasses
Aircraft Systems, Aerodynamics,
Airport Layouts & Markings,
Communications & Navigation,
Physiology, Weather Regulations, and
Cross-Country Planning.
*Ask about R4R discounts for
Single Airmen and Deployed Affected.*



YUBA COUNTY AIRPORT
Fleet Location
1364 Sky Harbor Dr. Olivehurst, CA

Aero Club • (530) 749-7696

www.BealeFSS.com/Aero-Club www.facebook.com/BealeAeroClub

Wellbeats™

Stay Fit With Virtual Instructors!

SEPTEMBER AEROBICS SCHEDULE

Monday	Tuesday	Wednesday	Thursday	Friday
5 Channels 6am: Intro to Strength (6wks) 10am: Prenatal 3pm: Daily Mobility	6 Circuits 6am: Strength Builder 10am: Upper Body 3pm: Cardio Core	7 Kinetics 6am: Basic Kinetics 10am: Bring it! Tabata 3pm: Body Fueled	1 Cycling 6am: Bing Ring Power 10am: Rev. Tutorial 3pm: Finish Strong	2 Toning 6am: Tabata Heat 10am: Double Whammy 3pm: Upper Body Fit
12 Channels 6am: Zumba Group 1 10am: Postnatal 3pm: A Stronger You (2wks)	13 Circuits 6am: Circuit Ladder 10am: HITT Cardio 3pm: Lower Back Strength	14 Kinetics 6am: Strength and Cardio Circuit 10am: Kinetics Tutorial 3pm: All In	15 Cycling 6am: HITTing Precision 10am: Big Ring Power 3pm: Jump & Run	16 Toning 6am: Upper Body & Abs 10am: Back to Basics 3pm: Strong Core
19 Channels 6am: Zumba Group 2 10am: Find Your Fit (4wks) 3pm: Prenatal	20 Circuits 6am: Cardio & Strength 10am: Total Body Band 3pm: HITT & Tabata	21 Kinetics 6am: Kinetics Tutorial 10am: Unstoppable 3pm: Body Weight Basic	22 Cycling 6am: Keeping Cadence 10am: Victory by Design 3pm: Fast & Furious	23 Toning 6am: Bis Tris Core More 10am: Make it Super 3pm: Strong Core
26 Channels 6am: Zumba Group 3 10am: Postnatal 3pm: Train for 10k (wk3)	27 Circuits 6am: Upper Body 10am: Total Body-No Equip. 3pm: Strength Builder	28 Kinetics 6am: Medicine Ball Circuit 10am: Body Weight Basic 3pm: Next Level	29 6am: Jump & Run 10am: Finish Strong 3pm: HITT Precision	30 6am: Rock Your Core 10am: Dare You To Balance 3pm: Absolutely Core

FREE ACCESS!
 OFFERED VIA THE FITNESS CENTER KIOSK

Important Information:

Most classes are taught by a virtual instructor via Kiosk at the Harris Fitness Center.

All classes are first come, first serve.

Aerobics Schedule POC:

Sra Raeven Williams
 and A1C Susmita Pantha

For all questions or details, please call the Fitness Center at (530) 634-2258

Harris Fitness Center • 634-2258 • www.BealeFSS.com/Harris-Fitness-Center

WELLBEATS VIRTUAL FITNESS



BEALE QUICK GLANCE

9 FSS FOOD CHOICES

CONTRAILS (DFAC)

Located in Main Base

Open to everyone with base access.

Daily Entree Specials, Soups & Salads,
Assortment of Sides, Pizza, Pasta, Sub
Sandwiches, and more

Simply to go: M-F 5:30am-7pm
Wkd/hol/fam day 7:30am-6:30pm

Breakfast: M-F 5:30-8am

Wkd/hol/fam day 7:30-9am

Lunch: Daily 10:30-1:30pm

Dinner: M-F 4:30-7pm

Wkd/hol/fam day 4:30-6:30pm

Midnt Meal: Daily 10:30pm-12:30am

Contrails Ground Support Meal 24/7

Email: 9FSS.FSVFFlightKitchen@us.af.mil

Call: 530-634-2537

DRAGONS LAIR

Located in the Flightline area

Open to everyone with base access.

Simply to go: M-F 6am-8pm

Breakfast: M-F 6-8am

Lunch: M-F 10:30am-1:30pm

Dinner: M-F 4:30-8pm

GOLD COUNTRY INN

Located in Main Base

Open to everyone with base access. 24/7.

Frozen meals, drinks, alcohol, and snacks

MOOS & BREWS

Located in Main Base at Recce Point Club

Burgers, Pizza, Wings, Milkshakes

Open: W-Sun 11am-7pm

ROD & GUN GRILL

At the Rod & Gun off Gavin Mandry

Open: W-F 11am-1pm

Wed: Tri-Tip Sandwich / Thu: Pulled Pork

Sandwich / Fri: Chili Dogs & Hot Dogs

SPARETIME GRILL

Main Base in the Bowling Center

Breakfast Items, Burgers, Sandwiches

Open: M-F 7am-2pm

OTHER FOOD CHOICES

BURGER KING

Located near Base Exchange

Open: M-F 6:30am-6:30pm

Wkd 10:30am-5pm

CAPEHART FUEL/SHOPETTE

Located in Housing

Open: M-F 6:30am-7pm

SAT 9am-6pm

Hours of operation and food choices subject to change.



FOOD CHOICES GUIDE

DGS BREW INTEL

Located near Intel Area

Open: M-F 6:30-11am

EXCHANGE STORE

Located in Main Base

Drinks, alcohol, packaged snacks.

Open: M-F 8:30am-6pm
Wkd 10am-5pm

HEFTY'S GYROS

Located in the Exchange Food Court

Open: M-F 10am-2pm

J STREET GAS STATION

Located at J Street & Warren Shingle Rd.

Open: M-F 6:30am-6pm
Wkd Closed

K.A.R.T

Located in Ramonda in the Flightline Area

Curry, Chicken Teriyaki, Rice, Musubi

Open: M-F 11am-2pm

MISSY'S AT the CLINIC

Located in the Clinic

Open: M-F 8-11am

MISSY'S COFFEE SHOP

At the Exchange

Burritos, Avocado Toast, Salads

Open: M-F 6:30am-2pm

RUNWAY PIZZA

In the Community Center

Open: M-F 11am-7pm
Wkd 3-7pm

THE CHICKEN COOP

Located near Intel Area

Previously "Wing Spot"

Open: M-F 10:30am-2pm

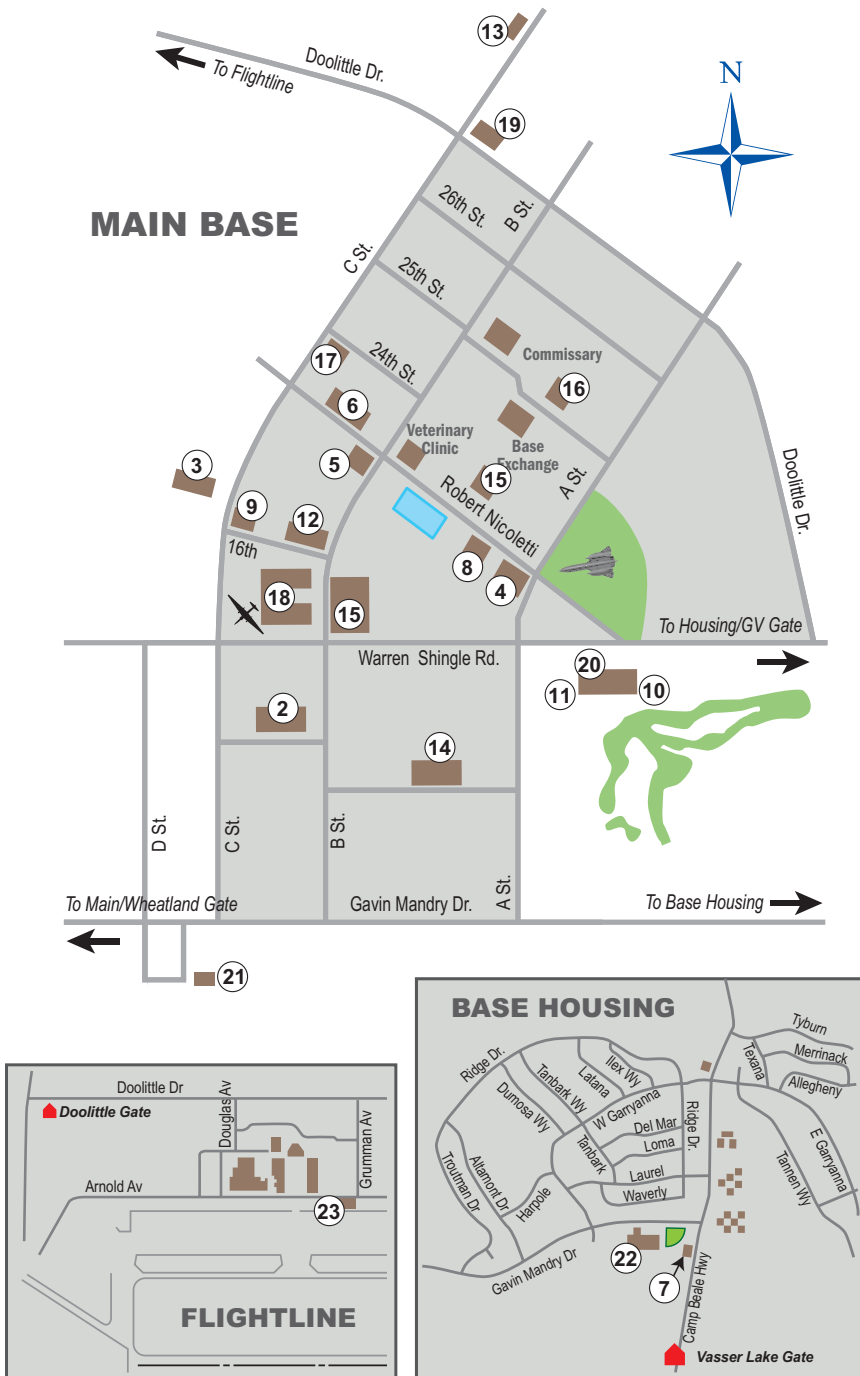
YUMMY TUMMY

Located in the Exchange Food Court

Poke Bowls, Salads

Open: M-F 10am-2pm

9 FSS FACILITY MAP



9 FSS HOURS OF OPERATION

- Aero Club** 530-749-7696
Yuba County Airport, Olivehurst
9am–2pm M–Th
Aero Club Members 24/7
Closed holidays
- 2 Military & Family Readiness** 634-2863
17800 B Street
7:30am–4:30pm M,T,Th,F
7:30am–1:30pm W
Closed weekends/holidays/fam. days
- 3 Airman Leadership School** 634-3332
2401 C Street
7:30am–4:30pm M–F
Closed weekends/holidays/fam. days
- 4 Arts & Crafts Center** 634-2294
17651 Warren Shingle Road
9am–4pm Tu–F
Closed weekends/holidays
- 4 Auto Hobby Center** 634-2296
17651 Warren Shingle Road
7am–6pm M–F
9am–5pm (no mechanic) Sat
Closed Sundays/holidays
- 5 Beale Lanes** 634-2299
17800 Robert Nicoletti Way
12–7pm M–Th
12–9pm F–Sat
Closed Sundays–holidays/fam. days
- 6 Child Development Center** 634-4717
18000 Robert Nicoletti Way
7am–5pm M–F
Closed weekends/holidays
- 7 Child/Youth Resource** 634-4418
5190 Camp Beale Hwy, Bldg. 3308
9am–3pm M–F
Closed Sundays–holidays/family days
- 8 Community Center** 634-3140
17700 Robert Nicoletti Way
12–8pm M–F
12–6pm Weekends
Closed holidays
- 9 Contrails (DFAC)** 634-2537
17853 16th Street
Simply to Go: 5:30am–7pm M–F
Simply to Go: 7:30am–6:30pm Wkd/hol/fam day
Breakfast: 5:30–8am M–F
Breakfast: 7:30–9am Wkd/hol/fam day
Lunch: 10:30am–1:30pm Daily
Dinner: 4:30–7pm M–F
Dinner: 4:30–6:30pm Wkd/hol/fam day
Midnt Meal: 10:30pm–12:30am Daily
- 23 Dragon's Lair** 634-0896
Bldg 1060, Flightline
Simply to Go: 6am–8pm M–F
Breakfast: 6–8am M–F
Lunch: 10:30am–1:30pm M–F
Dinner: 4:30–7pm M–F
- 12 Education Center** 634-2525
17849 16th Street
8am–3pm M–F
Closed weekends/holidays/family days
- 13 Fam Camp** 634-3382
220 Cedar Lane
9am–4pm M–F
0900-1200 Sat
(Contact Camp Host) Sat, Sun, Hol
- 7 Family Child Care** 812-3117
5190 Camp Beale Hwy, Bldg. 3308
By appt. M–F
- 14 Gold Country Inn** 634-2953
24112 A Street
Open 24/7
- 15 Fitness Center/Omni** 634-2258
2418 B Street
5am–10pm M–F
8am–5pm Wkd/hol/fam days
- 12 Hub Zemke Library** 634-2314
17849 16th Street
8am–6pm M–Th
8am–4pm F
9am–2pm Sat
Closed Sundays/holiday/fam. days
- 16 Independence Cinema** 634-3140
25th Street, Bldg. # 2474
(Doors open 30 min. prior) 7pm Sat
- 8 Information, Tickets, Tours** 634-4882
17700 Robert Nicoletti Way
12–5pm M–F
Closed weekends/holidays
- 11 Moos & Brews** 634-0936
17440 Warren Shingle Road
11am–7pm W–Sun
Closed holidays
- 18 NAF Human Resources** 634-2240
17852 16th Street
7am–4pm M–F
Closed weekends/holidays/fam. days
- 18 Military Personnel** 634-3100
17852 16th Street
7am–4pm M–F
Closed weekends/holidays/fam. days
- 19 Outdoor Adventure Cntr.** 634-2054
17630 Doolittle Drive
9am–5pm M–F
9am–1pm Sat/Fam Days
Closed Sundays/holidays
- 20 Recce Point Club** 634-2833
17440 Warren Shingle Road
Office hours: 7:30am–4:30pm M–F
Closed weekends/holidays/fam. days
- 21 Rod & Gun Club** 788-2473
7950 D Street
9am–4pm W–Sun
9am–1pm Fam Days
Closed holidays
- 5 Spare Time Grill** 634-2304
17800 Robert Nicoletti Way
7am–2pm M–F
Closed Weekends/holidays/fam. days
- 10 Venture Center** 788-0192
17440 Warren Shingle Road
11am–6pm W–Sun
Closed holidays
- 22 Youth Programs** 634-4953
15160 Gavin Mandry Dr.
6:15am–6pm M–F
Closed Weekends/holidays/fam. days

All 9 FSS Facilities are closed on weekends, holidays or ACC Family Days unless otherwise noted. Hours of operation are subject to change without notice.

9 FSS Marketing
6249 C Street
Beale AFB, CA 95903

FIRST CLASS
PRESORTED
POSTAGE & FEES PAID
MARYSVILLE, CA
PERMIT NO. 26