

February 2023



THE  
**READER**  
MAGAZINE

HAPPY  
*Valentine's Day*

**NFL Big  
Game Party**

**FEBRUARY 12**  
*page 2*

**Balloon  
Bouquets**

**FEBRUARY 14**  
*page 3*

**Couples  
Sip & Paint**

**FEBRUARY 17**  
*page 4*

**Tween  
Night Out**

**FEBRUARY 10**  
*page 10*



[www.BealeFSS.com](http://www.BealeFSS.com)

Your guide to services and events provided by the 9th Force Support Squadron.



**Huddle up with your friends at Moos & Brews to watch the biggest NFL game of the 2022-23 season!**

**SUNDAY, FEBRUARY 12**

**• MOOS & BREWS •**

**PRE-GAME STARTS AT 2:30PM • KICKOFF 3:30PM**



**Moos & Brews • 634-0936**

[www.BealeFSS.com/Moos-Brews](http://www.BealeFSS.com/Moos-Brews) • [www.facebook.com/MoosAndBrews](http://www.facebook.com/MoosAndBrews)



# Love

IS IN THE AIR

## BALLOON BOUQUETS

1 - mylar + 5 - latex balloons \$10

2 - mylar + 5 - latex balloons \$15

1 - X-large mylar + 2 - mylar + 5 latex balloons \$30

ARTS & CRAFTS WILL DELIVER BALLOON BOUQUETS ON

## Valentine's Day

- Supplies are limited, so order today.
- Delivery only to Beale facilities with civilian access.
- No deliveries to Lone Tree classrooms.
- Deadline for delivery orders is COB February 10.

### CARD MAKING CLASS

## Valentine Exploding Box



February 10 ♥ 5-7pm ♥ \$15

- Card fits into a 5x7 envelope.
- Sign up by February 8.

Arts & Crafts • 634-2294

www.BealeFSS.com/Arts-Crafts-Center • www.facebook.com/BealeArtsAndCrafts

# TEXAS HOLD 'EM



**THURSDAY, FEBRUARY 2**

**SIGN UP AT 4:30PM • TOURNAMENT STARTS AT 5PM**

**WINNERS WIN GIFT CARDS**

**First Place \$100 • Second Place \$50 • Third Place \$25**

**Members Free ~ Non-Members \$20**

**Open to ages 18 & older**

**Recce Point Club • 634-2833**

[www.BealeFSS.com/Recce-Point-Club](http://www.BealeFSS.com/Recce-Point-Club) • [www.facebook.com/ReccePointClub](http://www.facebook.com/ReccePointClub)

## Couples Sip & Paint

**FRIDAY  
FEBRUARY 17  
6PM**



*This month's  
featured two-piece  
couple's painting*

INCLUDES ONE

ADULT BEVERAGE

& APPETIZERS

**\$20 Club Members  
\$25 Non-Members  
(adults only)**

Reserve your spot by  
February 16, 634-2833.

Enjoy an evening of  
socializing & creativity.

**Recce Point Club • 2833**

[www.BealeFSS.com/Club](http://www.BealeFSS.com/Club) • [www.facebook.com/ReccePointClub](http://www.facebook.com/ReccePointClub)



**FEBRUARY 2023**

**SEE WHAT'S INSIDE**

Big Game Party	2	Aero Club	14
Arts & Crafts	3	NAF Human Resources	15
Recce Point Club	4	Wellbeats Fitness	16
Outdoor Adventure Center / ITT	6	Beale Lanes	17
Library	8	Child Development Center	18
Theater / Moos & Brews	9	Family Child Care / EFMP	19
Youth Center / M&FRC	10	Beale Food Guide	20–21
Education Center	11	FSS Map	22
February Events Calendar	12–13	FSS Hours & Directory	23



**9TH FORCE SUPPORT SQUADRON**

Lt Col Melissa Day  
*Commander*

**MARKETING STAFF**

Cathy Rodgers  
*Marketing Director*

Laura Holley  
*Commercial Sponsorship*

Ricky Villegas  
*Visual Information, Digital Media*

Tom Tennes  
*Visual Information, Print*

The **RECCE MAGAZINE** is published monthly by the Beale AFB 9th Force Support Marketing Department. Contents of the RECCE Magazine are not necessarily the official views of, or endorsed by, the U.S. Government, the DoD, or the Department of the Air Force. The appearance of advertising in this publication does not constitute endorsement by the federal government.

**ALL PROGRAMS, DATES AND TIMES ARE SUBJECT TO CHANGE WITHOUT NOTICE.**

For information regarding advertising in the Recce Magazine or to sponsor a program or event contact:

**9th Force Support Marketing Office**  
6249 C Street, Beale AFB, CA 95903  
530.634.5407/634.2283



[www.BealeFSS.com](http://www.BealeFSS.com)



[www.facebook.com/Beale9FSS](http://www.facebook.com/Beale9FSS)



[www.instagram.com/Beale9FSS](http://www.instagram.com/Beale9FSS)

## OAC TRIPS



### Tahoe Ski Shuttle

We will deliver you and your gear to Palisades Tahoe (formerly Squaw/Alpine) where you can enjoy an epic day of skiing or boarding down the slopes.

**February 5 • 7am–6pm**  
\$25 (trans. only) Sign up by 1/31



### Snow Play Day

Sled down a hill, build a snowman, make a snow angel or engage in a friendly snowball fight. Snow toys will be provided.

**February 25 • 9am–5pm**  
\$15 (trans./sleds) Sign up by 2/21



**We have a complete line of winter gear services.**

Tune-ups, Waxing, Binding Mounting, Repairs, and more!

### Snow gear rentals

We rent ski bibs, jackets, skis, snowboards, boots, helmets and winter toys.

## ITT TRIPS



### Nevada City Mardi Gras

This annual event features a festive parade and street fair, offering up spirited fun for all ages.

**February 19 • 11am–5pm**  
\$15 (trans. only) Sign up by 2/14



### K1 Speed Go-Karting

Experience adrenaline-pumping racing with speeds approaching 45 mph on a professionally-designed indoor track.

**February 26 • 9am–4:30pm**  
\$109 (trans./adm.) Sign up by 2/14

**ITT tickets must be purchased from ITT, located in the Community Center.**

**Upcoming March ITT Trips**  
**San Francisco St. Patrick's Parade**  
March 11  
**Waterfowl and Wine**  
March 25

**Purchase your discounted tickets for Disneyland, Universal Studios Hollywood, and Disney's Armed Services Salute Ticket Program**

**Stop by and check out other discounted ticket offers.**

**Outdoor Adventure Center**  
**634-2054**  
BealeFSS.com/OAC  
facebook.com/BealeOAC

**Information, Tickets & Travel**  
**634-4882**  
BealeFSS.com/Information-Tickets-Travel  
facebook.com/BealeITT



SUNDAYS IN FEBRUARY

# Prime Rib

ENJOY A 3 COURSE PRIME RIB DINNER  
FEATURING A GARDEN OR CAESAR  
SALAD, A 12OZ 30 DAY DRY AGED PRIME  
RIB, MASHED POTATOES, ASPARAGUS,  
AND CHEF'S CHOICE SEASONAL DESSERT

\*UPGRADE TO A 16OZ FOR AN ADDITIONAL \$10.



## \$35.99



STAYIN' ALIVE - ONE NIGHT OF THE BEE GEES FEB 3

BRIAN REGAN MAR 4

ROYAL COMEDY TOUR 2023 FEB 4

DANCING WITH THE STARS MAR 8

FEATURING JOE CLAIR, BRUCE BRUCE, SOMMORE & LAVELL CRAWFORD

UNDEROATH MAR 23

PAUL ANKA FEB 10

THEORY OF A DEADMAN & SKILLET MAR 25

BILL MAHER FEB 25

SEVEN LIONS APR 6

GEORGE CLINTON & PARLIAMENT FUNKADELIC MAR 2

EPIK HIGH APR 9



[ticketmaster.com](https://www.ticketmaster.com)

BUY TICKETS

3317 FORTY MILE ROAD, WHEATLAND | [HARDROCKHOTELSACRAMENTO.COM](https://www.hardrockhotelsacramento.com)

PAID AD. NO FEDERAL ENDORSEMENTS OF SPONSORS INTENDED

# Hub Zemke Library

## Cupid Quest

All month long

Find Cupid hidden in the library and win a treat!

## Heart Peacock Craft Bags

All month long

Come to the library and receive a heart peacock craft bag for the kids.

## Blind Date with a Book

All month long

With only a brief description, you can't judge these books by their covers! Unwrap, enjoy and discover new books!

## Valentine Writing Center

February 6-11

Visit our library where your children can create Valentines for their friends and family.

## Hub at the Pub presents: Marvel® Trivia

February 10, 4-6pm, at Moos & Brews

Form your team and compete in a superhero-themed trivia. Prizes will be awarded to the winning table and best costume.

## Story & Craft Time

February 16, 10:30am

"How to Help a Cupid" and "Black is a Rainbow Color" will be read. Afterwards, children can create Valentine necklaces, pre-K to kindergarten.



Hub Zemke Library • 634-2314

[www.BealeFSS.com](http://www.BealeFSS.com) • [www.facebook.com/HubZemkeLibrary](https://www.facebook.com/HubZemkeLibrary)



# MOVIE NIGHT AT THE INDEPENDENCE CINEMA

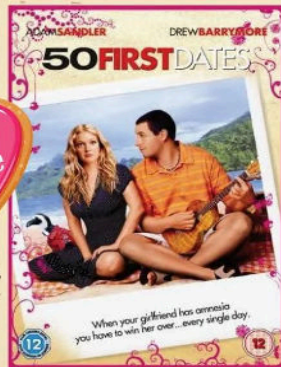
Doors open at 6:30pm • SHOWTIME at 7pm

February 11

February 25



While supplies last.



**50 FIRST DATES**  
[Rated PG-13]



**HIDDEN FIGURES**  
[Rated PG]



Independence Cinema • 634-3140  
www.BealeFSS.com/Independence-Cinema

THEATER / MOOS & BREWS

# OPEN MIC NIGHT!



Last Friday  
of the month, 3-5pm

HERE'S YOUR  
CHANCE TO  
BE A STAR!

Free pizza  
and wings for  
participants.

Open to everyone! Step up to the mic  
and share your amazing talent.  
Singing - Poetry - Musical Instruments

Moos & Brews • 634-0936

www.BealeFSS.com/Recce-Point-Club • www.facebook.com/MoosAndBrews

**TWEEN NIGHT OUT**  
**CLUE MYSTERY CHALLENGE**

**FEBRUARY 10**  
**6-9PM**

Find the clues!

**SOLVE THE MISTERY!**

Ages 9-12

Non-members \$15  
 20% off for members

**TEEN SHOPPING TRIP**  
**TO THE ROSEVILLE GALLERIA MALL**  
 February 16 • 12-5pm • Ages 13-18  
 Eat, Play, and Shop 'til You Drop! [\$5 transportation only]

**Youth Center • 634-4953**  
 BealeFSS.com/Youth-Center • facebook.com/BealeChildandYouthPrograms

## Military & Family Readiness Center *Classes and Workshops*

Most classes are held at the M&FRC. Call to register.  
 For Zoom classes, call 634-2863 to receive your invitation.

### Ditching the Dorms

**FEBRUARY 2**

9-10:30am (in-person) 7-8:30pm (Zoom)  
 A class for those who have never lived on their own and want to move out of the dorms.

### 5 Steps to Professional Employment

**FEBRUARY 2 • 9-11am**

Learn the process of finding, applying, and obtaining employment in the off-base civilian sector.

### Smooth Move

**FEBRUARY 2 • 2:30-4pm (Zoom)**

Out-processing workshop to learn about preparing for upcoming PCS move.

### Car Buying Workshop

**FEBRUARY 6**

11am-12pm (in-person) 7-8pm (Zoom)  
 Valuable information for those looking to purchase a new or used vehicle.

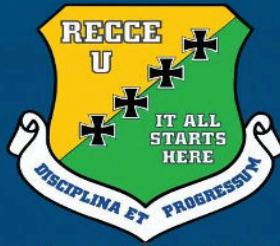
### 10 Steps to Federal Employment

**FEBRUARY 16 & 28 • 9-11am**

Learn the process of finding, applying, and obtaining federal employment.

**Military & Family Readiness Center • 634-2863**

BealeFSS.com/AFRC • facebook.com/BealeAirmanFamilyReadiness



### Recce U Professional Development

FOR MORE INFORMATION ABOUT PROFESSIONAL DEVELOPMENT OPPORTUNITIES, PLEASE CONTACT YOUR RECCE U TEAM

#### Career Assistance Advisor

MSgt Marques Bones • marques.bones@us.af.mil • 634-3644

#### Wing Professional Development NCOIC

TSgt Andrew Willis • andrew.willis.6@us.af.mil • 634-4747

#### FTAC NCOIC

SSgt Chelsea Tansley • chelsea.tansley@us.af.mil • 634-4747



Real Estate Done  
"The Swift Way"



*Michelle Swift* 

- Top Local Agent ~ 20 Year Area Resident
- Retired USAF Spouse
- Understands Military Families Needs
- Read My Reviews: <http://bit.ly/2tnLAPc>

*"Call me for all your real estate needs!"*

**530.635.4226**

**DRE #02000615**



Paid Ad.  
No Federal Endorsement of  
Advertisers Intended."


ARTS & CRAFTS WILL DELIVER  
BALLOON BOUQUETS ON  
VALENTINE'S DAY, FEBRUARY 14

See page 3 for details.



ARTS & CRAFTS CENTER  
*Valentine's Day*  
BALLOON BOUQUETS

SUNDAY	MONDAY	TUESDAY
<b>5</b> <b>Ski Shuttle</b> <i>(see page 6)</i>	<b>6</b> <b>Car Buying Workshop</b> <i>(see page 10)</i>	<b>7</b>
<b>12</b> <b>Big Game Party</b> <i>(see page 2)</i>	<b>13</b>	<b>14</b> <b>Valentine's Day Balloon Bouquets</b> <i>(see page 3)</i>  <b>Valentine's Day</b>
<b>19</b>	<b>20</b>  <b>President's Day</b>	<b>21</b>
<b>26</b> <b>K1 Go-Kart Trip</b> <i>(see page 6)</i>	<b>27</b>	<b>28</b>  <b>10 Steps to Federal Employment</b> <i>(see page 10)</i>

WEDNESDAY	THURSDAY	FRIDAY	SATURDAY
<p align="center"><b>1</b></p>	<p align="center"><b>2</b></p> <p><b>Ditching the Dorms, Smooth Move Brief, &amp; Professional Employment Tips</b> <i>(see page 10)</i></p> <p><b>Texas Hold'em</b> <i>(see page 4)</i></p>	<p align="center"><b>3</b></p>	<p align="center"><b>4</b></p>
<p align="center"><b>8</b></p>	<p align="center"><b>9</b></p>	<p align="center"><b>10</b></p> <p><b>Tween Night Out</b> <i>(see page 10)</i></p> <p><b>Valentine Exploding Box Class</b> <i>(see page 3)</i></p> <p><b>Hub at the Pub</b> <i>(see page 8)</i></p>	<p align="center"><b>11</b></p> <p><b>Movie Night</b> <i>(see page 9)</i></p>
<p align="center"><b>15</b></p>	<p align="center"><b>16</b></p> <p><b>10 Steps to Federal Employment</b> <i>(see page 10)</i></p> <p><b>Teen Shopping Trip</b> <i>(see page 10)</i></p> <p><b>Story Time</b> <i>(see page 8)</i></p>	<p align="center"><b>17</b></p> <p><b>Couples Sip &amp; Paint</b> <i>(see page 9)</i></p>	<p align="center"><b>18</b></p>
<p align="center"><b>22</b></p>	<p align="center"><b>23</b></p>	<p align="center"><b>24</b></p> <p><b>Open Mic</b> <i>(see page 4)</i></p>	<p align="center"><b>25</b></p> <p><b>Snow Play Day</b> <i>(see page 6)</i></p> <p><b>Movie Night</b> <i>(see page 9)</i></p>
	<p>For details and updates on any of the events in the Recce Magazine please log on to the Current Events page on our website at <a href="http://www.bealefss.com">www.bealefss.com</a></p>	<p align="center"><b>ICE</b></p> <p><b>Tell us what you think!</b></p> <p>Log on to <a href="http://www.bealefss.com">www.bealefss.com</a> and click on the <b>ICE logo</b> to the left.</p>	<p align="center"></p> <p>Follow the 9 FSS on Facebook</p> <p><a href="http://www.facebook.com/Beale9FSS">www.facebook.com/Beale9FSS</a></p>

## BEALE AERO CLUB NOW HIRING! CERTIFIED FLIGHT INSTRUCTORS



The Beale Aero Club is looking for experienced Certified Flight Instructors, CFI/CFII, to join our team to teach and mentor our growing number of student pilots. If you are interested please submit your resume or inquiries to [BealeAeroClubFTC@gmail.com](mailto:BealeAeroClubFTC@gmail.com) or call 530-749-7696.

**The office and fleet location are at the Yuba County Airport, 1364 Sky Harbor Dr., Olivehurst, CA.**

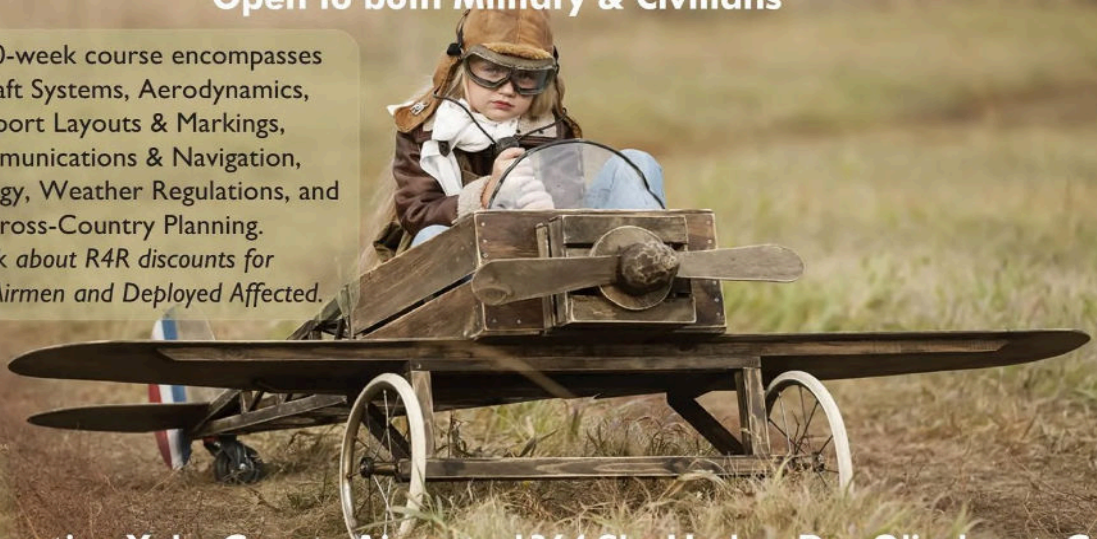
**Aero Club • 530-749-7696**

[www.BealeFSS.com/Aero-Club](http://www.BealeFSS.com/Aero-Club) • [www.facebook.com/BealeAeroClubFTC](http://www.facebook.com/BealeAeroClubFTC)

## Take your first step to getting your pilot license. PRIVATE PILOT GROUND SCHOOL

**Classes now forming!**  
Open to both Military & Civilians

This 10-week course encompasses Aircraft Systems, Aerodynamics, Airport Layouts & Markings, Communications & Navigation, Physiology, Weather Regulations, and Cross-Country Planning. Ask about R4R discounts for Single Airmen and Deployed Affected.



**Fleet Location Yuba County Airport • 1364 Sky Harbor Dr., Olivehurst, CA**

**Aero Club • (530) 749-7696**

[www.BealeFSS.com/Aero-Club](http://www.BealeFSS.com/Aero-Club) • [www.facebook.com/BealeAeroClub](http://www.facebook.com/BealeAeroClub)

# Become a Federal Employee at Beale AFB Join the **TEAM!**



CREATE YOUR PROFILE & APPLY ONLINE

@ **USA JOBS.GOV**

An Equal Opportunity Employer  
**NON-APPROPRIATED FUND (NAF) JOBS**  
Steady Employment | Regular & Flex Positions

Benefits\*:

- Promotion Opportunities
- Health, Dental & Life Insurance
- Awards • 401 (k) Savings Plan
- Holiday & Overtime Pay
- Shift Differential & Sunday Premium
- Night Pay Differential
- Worker's/Unemployment Compensation
- Military Leave • Administrative Leave
- Annual & Sick Leave
- Court Leave • Maternity Leave
- Family & Medical Leave Act (FMLA)
- Leave for Adoption

*\* Not all benefits available to all positions*

Access to:

- Hub Zemke Library
- Outdoor Adventure Center
- Information, Tickets & Travel
- Harris Fitness Center
- Contrails Dining Facility
- Beale Lanes Bowling Center
- Youth Center
- Child Development Center
- Community Center
- Arts & Crafts • Auto Hobby
- Aero Club • Rod & Gun Club
- Venture Park

**CURRENTLY HIRING\***  
Lifeguard • Cook  
Tools & Parts Assistant  
Custodial Worker • Recreation Assistant  
Child & Youth Program Assistant

*\*Job listing current at time of print (1/12/23)*

**SCAN THE QR CODE WITH YOUR PHONE TO GO  
DIRECTLY TO OPEN POSITIONS AT BEALE AFB**



For assistance, email [9FSS.FSMH@us.af.mil](mailto:9FSS.FSMH@us.af.mil)

**NAF Human Resources • 634-2240**  
[www.BealeFSS.com/NAF](http://www.BealeFSS.com/NAF) • [www.facebook.com/Beale9FSS](http://www.facebook.com/Beale9FSS)

NAF HUMAN RESOURCES

Stay Fit With Virtual Instructors!

**Wellbeats™**

OFFERED VIA THE FITNESS CENTER KIOSK

FREE  
ACCESS!

Most classes are taught by a virtual instructor via Kiosk at the HFC.

All classes are first come, first serve (8 max per class).

**Aerobics schedule POC: SrA Raeven Williams and A1C Susmita Pantha**

For all questions or details, please call the Fitness Center at **634-2258**.

**FIRST  
COMMAND®**

## INVEST IN YOUR FUTURE

You never back down from a challenge. You understand what it means to sacrifice. And you always put your discipline first. Now it's time to focus on building a financial future worthy of your service.

Contact us today to begin your pursuit of financial security.

### FIRST COMMAND FINANCIAL SERVICES

5767 Greenback Lane, Suite 150

Sacramento, CA 95841

[www.firstcommand.com](http://www.firstcommand.com)

**916.567.9600**

©2022 First Command Financial Services, Inc. is the parent company of First Command Brokerage Services, Inc. (Member SIPC, FINRA), First Command Advisory Services, Inc. and First Command Insurance Services, Inc. Securities products and brokerage services are provided by First Command Brokerage Services, Inc., a broker-dealer. Financial planning and investment advisory services are provided by First Command Advisory Services, Inc., an investment adviser. (CA Lic. No. DH38049) Insurance products and services are provided by First Command Insurance Services, Inc. Securities are not FDIC insured, have no bank guarantee and may lose value. A financial plan, by itself, cannot assure that retirement or other financial goals will be met. First Command Financial Services, Inc. and its related entities are not affiliated with or endorsed by the U.S. government or the U.S. Armed Forces.



# **SORRY**

**Beale Lanes will  
TEMPORARILY  
CLOSE JANUARY 9  
due to facility renovations.**

The cool news is that  
Beale Lanes is finally  
getting their long-awaited  
air conditioning unit!

---

**Additionally, the Spare Time Grill will  
close starting January 12 and  
temporarily relocate  
breakfast only from 7-10am  
at Moos & Brews on January 17.**

*It is recommended to call ahead to  
Moos & Brews at 634-0936 for breakfast orders.*

Follow our Facebook page  
[www.Facebook.com/BealeLanes](http://www.Facebook.com/BealeLanes)  
to stay up to date on our progress!

**The Beale Child Development Center is looking for Early Childhood Professionals, entry through leadership levels!**

**EMPLOYMENT OFFERS:**

Great Starting Wages • Good Benefits  
Guaranteed 20 Hours per Week  
Accredited Education and Training  
Military Spouse Preference

**Plus, 100% Free Child Care for 1st Child and 25% Off Additional Child After Multiple Child Discount.**

**HOW TO APPLY**

Log on to [www.usajobs.gov](http://www.usajobs.gov) and create an account.  
Search KEYWORD: **Child and Youth Program Assistants**  
Enter LOCATION: **Beale AFB**  
Follow direction to apply and wait for a response.

**FOR ASSISTANCE**

Email: [9FSS.FSMH@us.af.mil](mailto:9FSS.FSMH@us.af.mil) or NAF Human Resources at 530-634-2240

**Child Development Center • 634-4717**

[www.BealeFSS.com/CDC](http://www.BealeFSS.com/CDC) • [www.facebook.com/BealeYouthPrograms](http://www.facebook.com/BealeYouthPrograms)

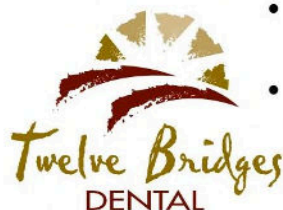


Drs. Insiya & Raj Zanzi

*"A Healthy Smile  
is A Beautiful Smile!"*  
*We Welcome Beale AFB Families*



- **WE ACCEPT MILITARY INSURANCE** •   
- Evening & Saturday Appointments Available
- New Patients & Emergencies Welcome
- Flexible Payment Plans
- Crowns, Root Canals, Implants, Veneers and Dentures
- Digital X-rays, IntraOral Camera, Massage Chairs, and NETFLIX
- Braces & INVISALIGN for adults & kids



*Gentle Family & Cosmetic Care*  
**Raj Zanzi, DMD • Insiya Zanzi, DDS**  
**Allen Sanders, DDS (Orthodontics)**



**916-797-0825**  
**1424 Blue Oaks Blvd.,**  
**Roseville (Hwy 65 & Blue Oaks exit)**

**\$50**  
**CREDIT**

Towards Dental Work  
(Excluding exam, x-rays,  
cleaning & deductible)\*  
New patients only, one per family  
\*Not valid with any other offer.  
Expires: February 28, 2023

[www.12BridgesDental.com](http://www.12BridgesDental.com)

Paid Ad. No Federal Endorsement of Advertisers Intended.

# Expanded Child Care

**Family Child Care needs YOU!**

**If you love children, this is an opportunity that can't be missed!**

- All training provided
- Work out of your own home
- Set your own hours
- Toys & equipment provided by the Air Force
  - Build your resume
  - Set your own rules
- Provide much needed help to service members and their children

**Contact the FCC office to start your application process today!**



FAMILY CHILD CARE

**Family Child Care • 530-634-4418**  
9FSS/FSFF@us.af.mil



FAMILY CHILD CARE / EFMP

## EFMP & RESPITE CARE PROGRAM

**Receive 40 hours per month of free child care for military families with a disabled child.**



**If your child has a disability, your family may qualify to be Q-Coded and registered with the EFMP program with the Air Force.**

If you are verified as an EFMP family, you can qualify for Respite Care for the child with a disability, and for all the siblings as well. The hours and the respite care providers are scheduled monthly through the FCC Coordinator.

**Contact the FCC Coordinator at (530) 812-3117 or bealefcc@gmail.com**



To learn more about the EFMP Program, please contact **Kim Hogue** at kimberly.hogue.1@us.af.mil or the EFMP Medical Specialist, **Melissa Gardner** at melissa.gardner.ctr@us.af.mil.



## BEALE QUICK GLANCE

### 9 FSS FOOD CHOICES

#### CONTRAILS (DFAC)

*Located in Main Base*

Open to everyone with base access.

Daily Entree Specials, Soups & Salads,  
Assortment of Sides, Pizza, Pasta, Sub  
Sandwiches, and more

Simply to go: M-F 5:30am-7pm  
Wkd/hol/fam day 7:30am-6:30pm

Breakfast: M-F 5:30-8am  
Wkd/hol/fam day 7:30-9am

Lunch: Daily 10:30-1:30pm

Dinner: M-F 4:30-7pm  
Wkd/hol/fam day 4:30-6:30pm

Midnt Meal: Daily 10:30pm-12:30am

#### **Contrails Ground Support Meal 24/7**

Email: 9FSS.FSVF.FlightKitchen@us.af.mil

Call: 530-634-2537

#### DRAGONS LAIR

*Located in the Flightline area*

Open to everyone with base access.

Simply to go: M-F 6am-8pm

Breakfast: M-F 6-8am

Lunch: M-F 10:30am-1:30pm

Dinner: M-F 4:30-8pm

#### GOLD COUNTRY INN

*Located in Main Base*

Open to everyone with base access. 24/7.

Frozen meals, drinks, alcohol, and snacks

#### MOOS & BREWS

*Located in Main Base at Recce Point Club*

Burgers, Pizza, Wings, Milkshakes

Open: W-Sun 11am-7pm

#### ROD & GUN GRILL

*At the Rod & Gun off Gavin Mandry*

Open: W-F 11am-1pm

Wed: Tri-Tip Sandwich / Thu: Pulled Pork  
Sandwich / Fri: Chili Dogs & Hot Dogs

#### SPARE TIME GRILL

*Main Base in the Bowling Center*

Breakfast Items, Burgers, Sandwiches

**CLOSED FOR RENOVATIONS**

Hours of operation and food choices subject to change.



# FOOD CHOICES GUIDE

## OTHER FOOD CHOICES

### BURGER KING

Located near Base Exchange

Open: M-F 6:30am-6:30pm  
Wkd 10:30am-5pm

### CAPEHART FUEL/SHOPETTE

Located in Housing

Open: M-F 6:30am-7pm  
SAT 9am-6pm

### DGS BREW INTEL

Located near Intel Area

Open: M-F 6:30-11am

### EXCHANGE STORE

Located in Main Base

Drinks, alcohol, packaged snacks.

Open: M-F 8:30am-6pm  
Wkd 10am-5pm

### HEFTY'S GYROS

Located in the Exchange Food Court

Open: M-F 10am-2pm

### J STREET GAS STATION

Located at J Street & Warren Shingle Rd.

Open: M-F 6:30am-6pm  
Wkd Closed

### K.A.R.T

Located in Ramonda in the Flightline Area

Curry, Chicken Teriyaki, Rice, Musubi

Open: M-F 11am-2pm

### MISSY'S at the CLINIC

Located in the Clinic

Open: M-F 8-11am

### MISSY'S COFFEE SHOP

At the Exchange

Burritos, Avocado Toast, Salads

Open: M-F 6:30am-2pm

### RUNWAY PIZZA

In the Community Center

Open: M-F 11am-7pm  
Wkd 3-7pm

### THE CHICKEN COOP

Located near Intel Area

Previously "Wing Spot"

Open: M-F 10:30am-2pm

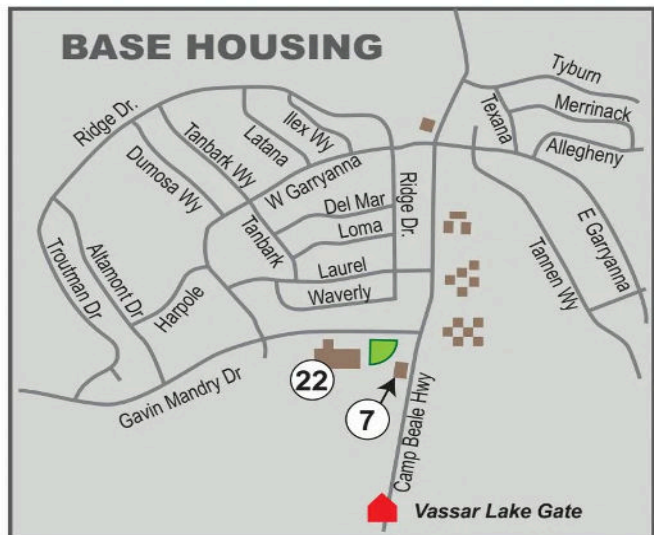
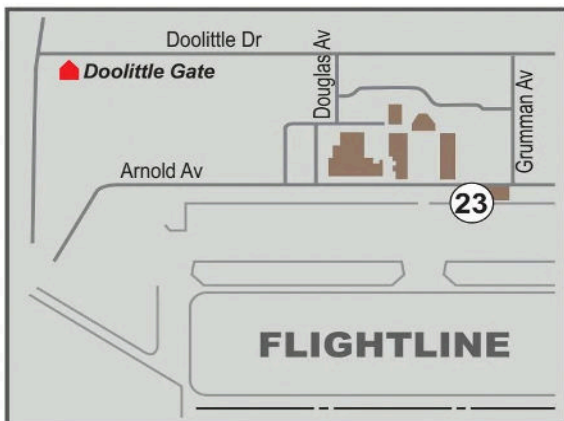
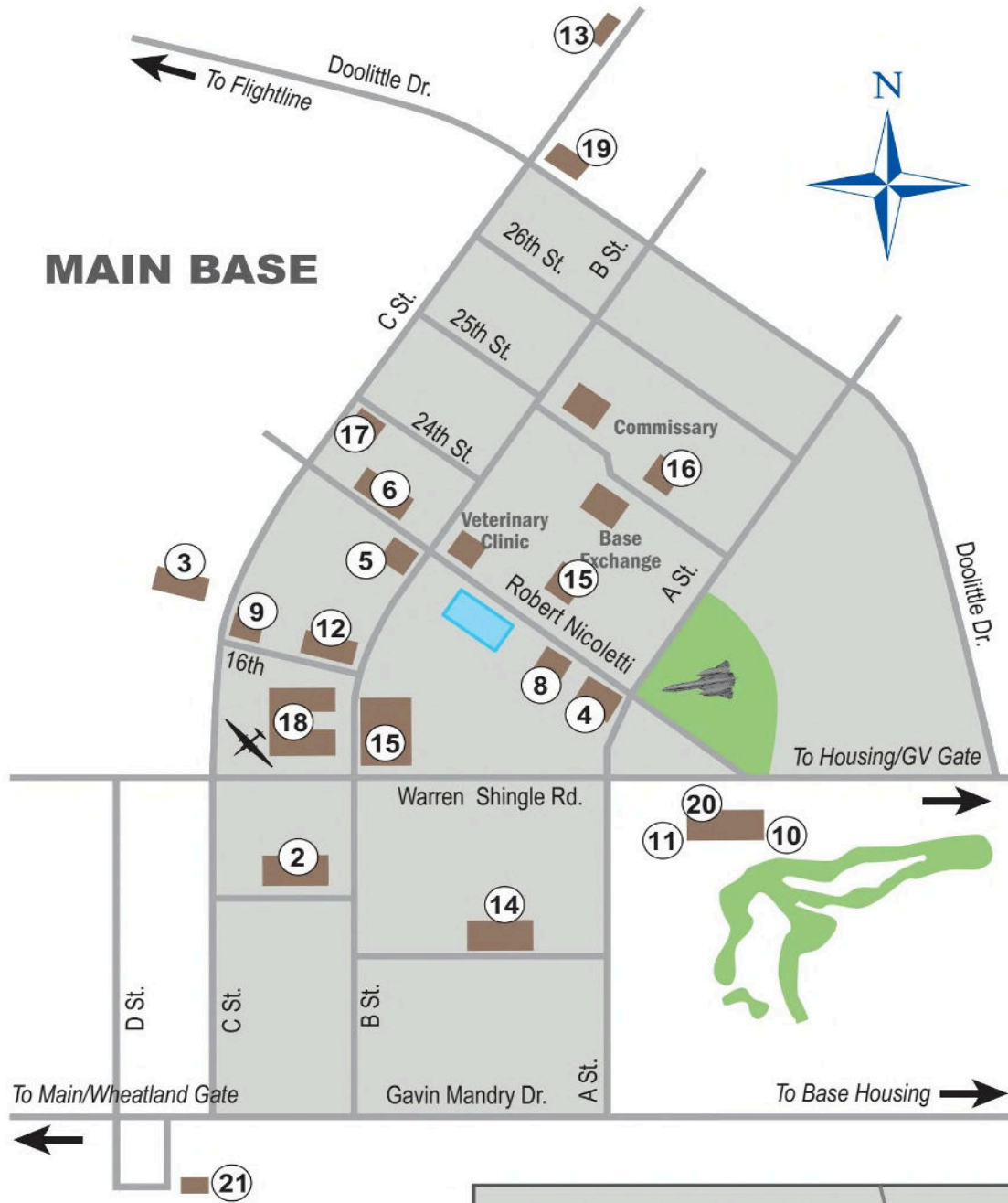
### YUMMY TUMMY

Located in the Exchange Food Court

Poke Bowls, Salads

Open: M-F 10am-2pm

# 9FSS FACILITY MAP



# 9FSS HOURS OF OPERATION

- Aero Club** 530-749-7696  
Yuba County Airport, Olivehurst  
9am-4pm M-Th  
Aero Club Members 24/7  
Closed holidays
- 2 Military & Family Readiness** 634-2863  
17800 B Street  
7:30am-4:30pm M,T,Th,F  
7:30am-1:30pm W  
Closed weekends/holidays/fam. days
- 3 Airman Leadership School** 634-3332  
2401 C Street  
7:30am-4:30pm M-F  
Closed weekends/holidays/fam. days
- 4 Arts & Crafts Center** 634-2294  
17651 Warren Shingle Road  
9am-4pm Tu-F  
Closed weekends/holidays
- 4 Auto Hobby Center** 634-2296  
17651 Warren Shingle Road  
7am-6pm M-F  
9am-3pm (no mechanic) Sat  
Closed Sundays/holidays
- 5 Beale Lanes** 634-2299  
17800 Robert Nicoletti Way  
**Closed for renovations**
- 6 Child Development Center** 634-4717  
18000 Robert Nicoletti Way  
6:30am-5:30pm M-F  
Closed weekends/holidays/fam days
- 7 Child/Youth Resource** 634-4418  
5190 Camp Beale Hwy, Bldg. 3308  
9am-3pm M-F  
Closed weekends/holidays/fam days
- 8 Community Center** 634-3140  
17700 Robert Nicoletti Way  
12-8pm M-F  
12-6pm Weekends  
Closed holidays/family days
- 9 Contrails (DFAC)** 634-2537  
17853 16th Street  
Simply to Go: 5:30am-7pm M-F  
Simply to Go: 7:30am-6:30pm Wkd/hol/fam day  
Breakfast: 5:30-8am M-F  
Breakfast: 7:30-9am Wkd/hol/fam day  
Lunch: 10:30am-1:30pm Daily  
Dinner: 4:30-7pm M-F  
Dinner: 4:30-6:30pm Wkd/hol/fam day  
Midnt Meal: 10:30pm-12:30am Daily
- 23 Dragon's Lair** 634-0896  
Bldg 1060, Flightline  
Simply to Go: 6am-8pm M-F  
Breakfast: 6-8am M-F  
Lunch: 10:30am-1:30pm M-F  
Dinner: 4:30-7pm M-F
- 12 Education Center** 634-2525  
17849 16th Street  
8am-3pm M-F  
Closed weekends/holidays/family days
- 13 Fam Camp** 634-3382  
220 Cedar Lane  
9am-4pm M-F  
0900-1200 Sat  
(Contact Camp Host) Sat, Sun, Hol
- 7 Family Child Care** 812-3117  
5190 Camp Beale Hwy, Bldg. 3308  
By appt. M-F
- 14 Gold Country Inn** 634-2953  
24112 A Street  
Open 24/7
- 15 Fitness Center/Omni** 634-2258  
2418 B Street  
5am-10pm M-F  
8am-5pm Wkd/hol/fam days
- 12 Hub Zemke Library** 634-2314  
17849 16th Street  
8am-6pm M-Th  
8am-4pm F  
9am-2pm Sat  
Closed Sundays/holiday/fam. days
- 16 Independence Cinema** 634-3140  
25th Street, Bldg. # 2474  
(Doors open 30 min. prior) 7pm Sat
- 8 Information, Tickets, Tours** 634-4882  
17700 Robert Nicoletti Way  
12-5pm M-F  
Closed wknds/holidays/fam. days
- 11 Moos & Brews** 634-0936  
17440 Warren Shingle Road  
11am-7pm W-Sun  
Closed holidays
- 18 NAF Human Resources** 634-2240  
17852 16th Street  
7am-4pm M-F  
Closed weekends/holidays/fam. days
- 18 Military Personnel** 634-3100  
17852 16th Street  
7am-4pm M-F  
Closed weekends/holidays/fam. days
- 19 Outdoor Adventure Center** 634-2054  
17630 Doolittle Drive  
9am-5pm M-F  
9am-1pm Sat/Fam Days  
Closed Sundays/holidays
- 20 Recce Point Club** 634-2833  
17440 Warren Shingle Road  
Office hours: 7:30am-4:30pm M-F  
Closed weekends/holidays/fam. days
- 21 Rod & Gun Club** 788-2473  
7950 D Street  
9am-4pm W-Sun  
9am-1pm Fam Days  
Closed holidays
- 5 Spare Time Grill** 634-2304  
17800 Robert Nicoletti Way  
**Closed for renovations**
- 10 Venture Park** 788-0192  
17440 Warren Shingle Road  
11am-6pm W-Sun  
Closed holidays
- 22 Youth Programs** 634-4953  
15160 Gavin Mandry Dr.  
6:15am-6pm M-F  
Closed weekends/holidays/fam. days

**All 9 FSS Facilities are closed on weekends, holidays and/or ACC Family Days unless otherwise noted. Hours of operation are subject to change without notice.**



# *Beach Scene Cutting Board Resin Pouring Classes*

Learn the basics of working with resin. These 2-part classes teaches resin basics as you create a unique beach scene on a cutting board for your kitchen decor or to give as a special handmade gift. These classes are limited to 4 participants so sign up early. Class fee \$65.

**March 9 and 14 • 3:30pm**

*Sign up by March 7*

*Save the  
Dates!*

*Upcoming Class Schedule*

**April 6 & 11 • Sign up by April 4**

**May 11 & 16 • Sign up by May 9**

**Arts & Crafts Center • 634-2294**

BealeFSS.com/Arts-Crafts-Center • facebook.com/BealeArtsAndCrafts



**9 FSS Marketing  
6249 C Street  
Beale AFB, CA 95903**

FIRST CLASS  
PRESORTED  
POSTAGE & FEES PAID  
MARYSVILLE, CA  
PERMIT NO. 26